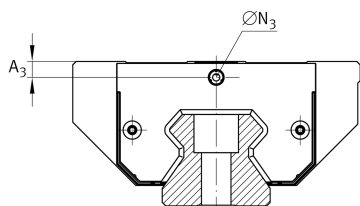
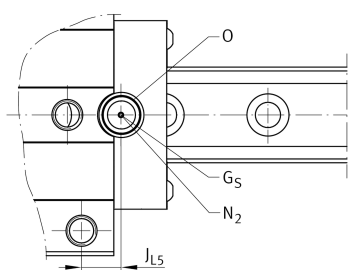
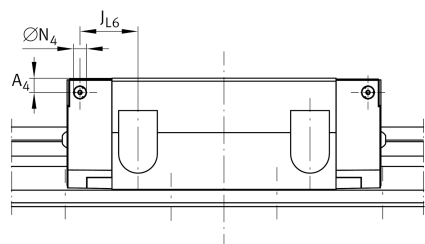
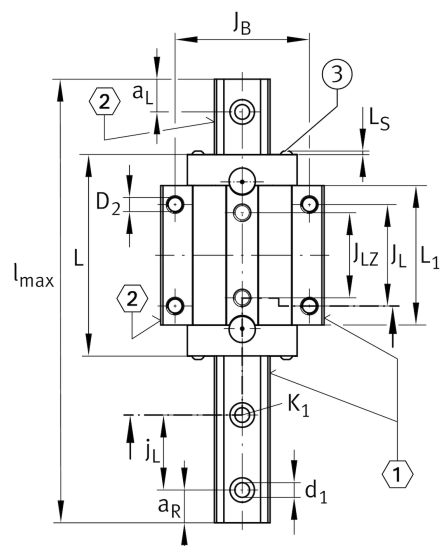
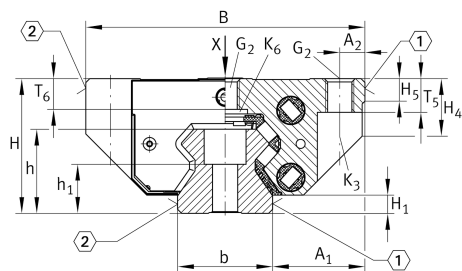


## RUE35-F-L

滚子单轨引导系统

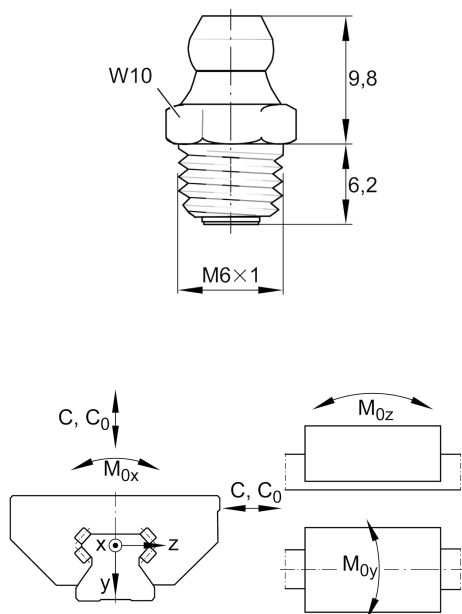
直线循环滚珠轴承和导轨组件，带有满装循环滚珠系统的长滑块，油润滑或脂润滑

### 技术信息



## 安装尺寸

A <sub>1</sub>	[33] mm	
J <sub>B</sub>	[82] mm	
b	[34] mm	width rail
Tol <sub>b</sub>	[-0.005] mm	Upper tolerance
Tol <sub>b</sub>	[-0.035] mm	Lower tolerance
A <sub>2</sub>	[9] mm	
L <sub>1</sub>	[111] mm	
J <sub>L</sub>	[62] mm	
J <sub>LZ</sub>	[52] mm	
j <sub>L</sub>	[40] mm	
a <sub>L min</sub>	[20] mm	
a <sub>L max</sub>	[31] mm	
a <sub>R min</sub>	[20] mm	Distance
a <sub>R max</sub>	[31] mm	
H <sub>1</sub>	[6.5] mm	
H <sub>4</sub>	[20.5] mm	
H <sub>5</sub>	[8] mm	
T <sub>5</sub>	[12] mm	
T <sub>6</sub>	[10.9] mm	
h	[30] mm	
h <sub>1</sub>	[17.5] mm	
Tol <sub>h<sub>1</sub></sub>	[0.5] mm	Upper tolerance
Tol <sub>h<sub>1</sub></sub>	[-0.5] mm	Lower tolerance
G <sub>2</sub>	[M10]	fixing screws
G <sub>2MA</sub>	[41] Nm	maximum tightening torque
K <sub>1</sub>	[M8]	fixing screws
K <sub>1MA</sub>	[41] Nm	maximum tightening torque
K <sub>3</sub>	[M8]	fixing screws
K <sub>3MA</sub>	[41] Nm	maximum tightening torque
K <sub>6</sub>	[M8]	fixing screws
K <sub>6MA</sub>	[24] Nm	maximum tightening torque
d <sub>1</sub>	[8.6] mm	
D <sub>2</sub>	[8.6] mm	
A <sub>3</sub>	[6.6] mm	position lubrication adapter
N <sub>3</sub>	[M6]	lubrication connector
A <sub>4</sub>	[5.6] mm	position lubrication connector
N <sub>4</sub>	[M6]	lubrication connector
J <sub>L6</sub>	[37.4] mm	position lubrication connector
N <sub>2max</sub>	[6] mm	
J <sub>L5</sub>	[27.2] mm	



### Main dimensions

$l_{\max}$	[5,900] mm	Max length single piece guideway
H	[48] mm	height system
B	[100] mm	width carriage
L	[148.8] mm	overall length carriage

### Technical data

C	[70,000] N	dynamic load rating
$C_0$	[175,000] N	static load rating
$M_{0x}$	[1,500] Nm	static moment rating about X axis
$M_{0y}$	[3,350] Nm	static moment rating about Y axis
$M_{0z}$	[3,000] Nm	static moment rating about Z axis

### Related products

[RWU35-F-L]	Carriage
[TSX35-E]	Guideway