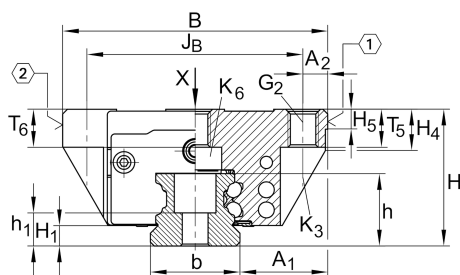


## KUVE20-B-NL

球单轨引导系统

滑块 KWVE...-B-NL, 低长型滑块, 四列

### 技术信息



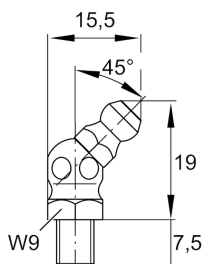
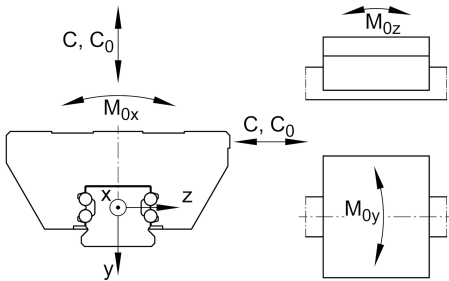
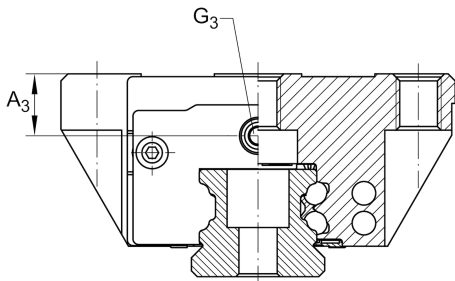
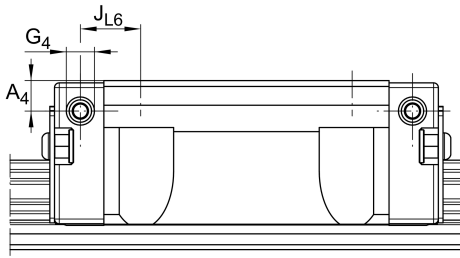
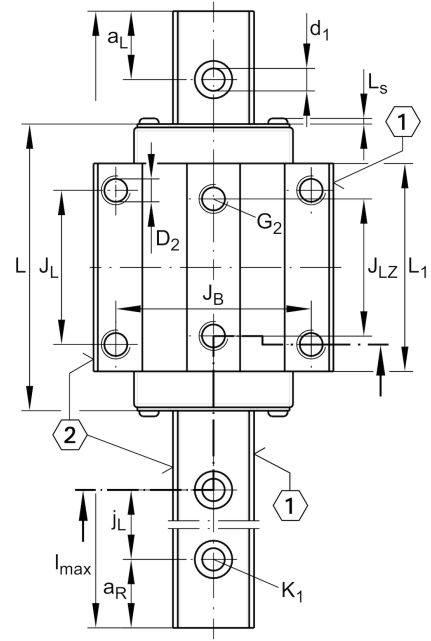
### Main dimensions

$l_{max}$	[5,880] mm	Max length single piece guideway
H	[27] mm	height system
B	[63] mm	width carriage
L	[88.9] mm	overall length carriage

### 安装尺寸

C	[16,200] N	dynamic load rating
$C_0$	[36,500] N	static load rating
$M_{0x}$	[452] Nm	static moment rating about X axis
$M_{0y}$	[430] Nm	static moment rating about Y axis
$M_{0z}$	[430] Nm	static moment rating about Z axis

安装尺寸



$A_1$	[21.5] mm	
$J_B$	[53] mm	
$b$	[20] mm	width rail
$Tol_b$	[-0.005] mm	Upper tolerance
$Tol_b$	[-0.03] mm	Lower tolerance
$A_2$	[5] mm	
$L_1$	[67.9] mm	
$L_s$	[1.3] mm	
$J_L$	[40] mm	
$J_{LZ}$	[35] mm	
$j_L$	[60] mm	
$a_{L\ min}$	[20] mm	
$a_{L\ max}$	[53] mm	
$a_{R\ min}$	[20] mm	
$a_{R\ max}$	[53] mm	
$H_1$	[4.5] mm	
$H_4$	[8.6] mm	
$H_5$	[5.25] mm	
$T_5$	[8] mm	
$T_6$	[6] mm	
$h$	[17] mm	
$h_1$	[8.6] mm	
$G_2$	[M6]	fixing screws
$G_{2MA}$	[10] Nm	maximum tightening torque
$K_1$	[M5]	fixing screws
$K_{1MA}$	[10] Nm	maximum tightening torque
$K_3$	[M5]	fixing screws
$K_{3MA}$	[10] Nm	maximum tightening torque
$K_6$	[M5]	fixing screws
$K_{6MA}$	[4] Nm	maximum tightening torque
$d_1$	[5.8] mm	
$D_2$	[5.5] mm	
$A_3$	[4.7] mm	
$G_3$	[M5] mm	
$t_{G_3}$	[7] mm	
$A_4$	[3.3] mm	
$G_4$	[M3]	
$t_{G_4}$	[5.5] mm	

数据表仅为所选产品的尺寸和基本额定载荷概览。请始终遵守本产品的所有更多信息和指南。您可通过我们网站上的联系表了解更多信息。

**Related products**

[KWVE20-B-NL]	Carriage
[TKVD20]	suitable Guide Rail