

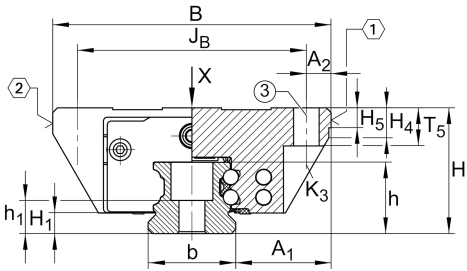


### KWVE15-B-EC

循环球轴承滑块

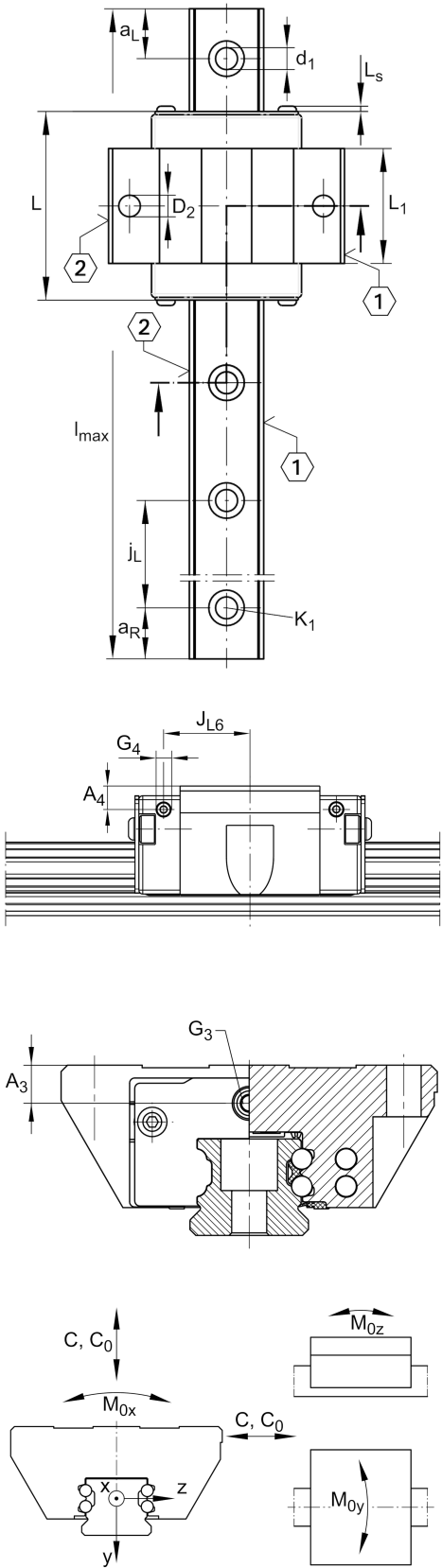
滑块 KWVE...-B-EC, 互换性高, 短滑块, 四列

技术信息



主要尺寸和性能数据

H	[24] mm	height system
B	[52] mm	width carriage
L	[44.5] mm	overall length carriage
C	[4,900] N	dynamic load rating
C <sub>0</sub>	[8,300] N	static load rating
M <sub>0x</sub>	[86] Nm	static moment rating about X axis
M <sub>0y</sub>	[35] Nm	static moment rating about Y axis
M <sub>0z</sub>	[35] Nm	static moment rating about Z axis
	[0.13] kg	重量



安装尺寸

VMKB_065	[KWVE]	Material name
A <sub>1</sub>	[18.5] mm	
J <sub>B</sub>	[41] mm	
b	[15] mm	width rail
A <sub>2</sub>	[5.5] mm	
L <sub>1</sub>	[23.1] mm	
L <sub>S</sub>	[1.3] mm	
H <sub>1</sub>	[4.3] mm	
H <sub>4</sub>	[6.1] mm	
H <sub>5</sub>	[4.75] mm	
T <sub>5</sub>	[7] mm	
K <sub>3</sub>	[M4]	fixing screws below (DIN ISO 4762-12.9)
K3 M <sub>A</sub>	[5] Nm	maximum tightening torque
D <sub>2</sub>	[4.5] mm	
A <sub>3</sub>	[4.3] mm	position lubrication connector
G <sub>3</sub>	[M3]	lubrication connector
t G <sub>3</sub>	[5.5] mm	maximum permissible screw depth for lubrication connectors
A <sub>4</sub>	[3.2] mm	position lubrication connector
G <sub>4</sub>	[M3] mm	lubrication connector
t G <sub>4</sub>	[5.5] mm	maximum permissible screw depth for lubrication connectors
J <sub>L6</sub>	[15.8] mm	position lubrication connector

